

DocuWare®

CDMAKER

Recording Automatically on CD or DVD

This innovative module increases your storage media choices by allowing you to store DocuWare file cabinets on compact disk (CD) and digital versatile disc (DVD) media. The recording process is performed fully automatically. No additional recording software is needed. Documents stored on CD-ROM or DVD can be accessed as an integral part of a DocuWare document management solution, or alternatively, as a self-contained medium in a stand-alone application.

Functionality

DocuWare CDMAKER stores DocuWare file cabinets on CDs or DVDs. Although an add-on module, CDMAKER integrates seamlessly with DocuWare.

Once installed, you can use the capacity limit function within the DocuWare file cabinet administration and have DocuWare warn you when a cabinet has reached the pre-defined capacity, and creating of a CD or DVD is necessary.

When defining the documents to record to a CD or DVD, CDMAKER allows you to select logical disks from multiple DocuWare cabinets up to the CD or DVD capacity. You are therefore able to limit the capacity of a DocuWare disk (a directory created by DocuWare) so that all the data stored on it will fit on a removable disk.

DocuWare CDMAKER allows you to include the retrieval program CDREQUEST on the CD or DVD so that the database index information can be included.

This is especially useful if the recorded CD or DVD will be used as a stand-alone retrieval medium.

You can also only create an image of files to be recorded into the subdirectory of your hard disk. Then you can record the CD or DVD later with any program or transfer the data to any other medium.

Retrieving from a CD or DVD

CDs or DVDs recorded with DocuWare CDMAKER are completely backward compatible with earlier versions of DocuWare. This flexibility allows the recorded CD or DVD to be an integral part of a complete document management system with DocuWare.

Choose between single access CD-ROM or DVD drive, or a networked jukebox solution – DocuWare CDMAKER makes the choices simple!

Capacity limits

Here you define which capacity limits shall be applied to a storage disk of this file cabinet. This ensures that the document files of one disk (e.g., a virtual disk on your hard disk) can be transferred later to another storage disk (e.g., a CD-ROM).

Utilize capacity limits

Define default settings for all disks
 Specific settings for disk number: [] Define

Capacity limits

Include size of database
 Include size of CDREQUEST

Cluster size of disk(s): 2048 Byte Standard CD settings
mag. size of disk(s): 600 MB Standard DVD settings
Overhead of disk(s): 1045876 Byte
Overhead of each file: 48 Byte

Save as default setting Save as disk setting

Remaining storage capacity
Disk number: [] MB Update remaining storage capacity

Delete default settings Delete disk setting

Cancel < Back Finish Help



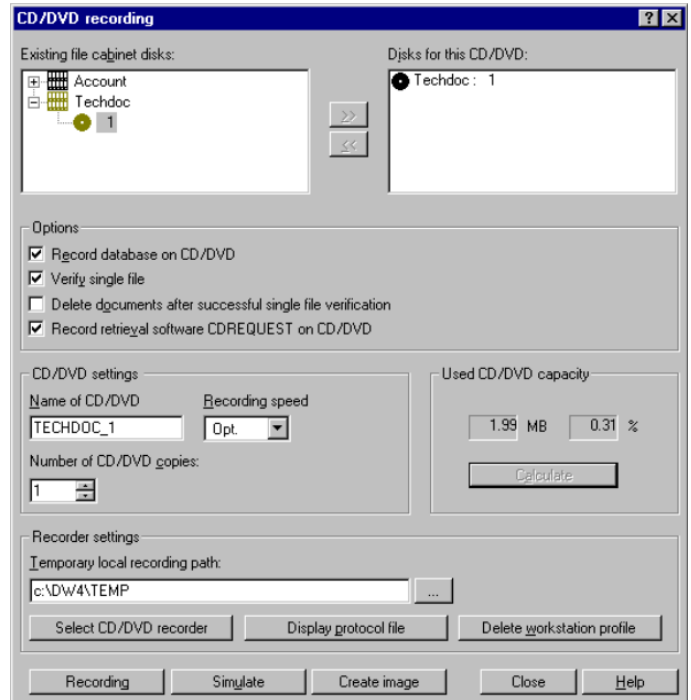
Optionally, every CD or DVD that includes DocuWare CDREQUEST and the corresponding database files, can be used as stand-alone retrieval media – independent of DocuWare.

All of the functions required to retrieve documents from the CD or DVD are recorded with CDREQUEST. Documents can be displayed, printed or faxed from any Windows PC that is equipped with a CD-ROM or DVD drive – an ideal solution for mobile and micro-publishing applications.

Recording a CD or DVD

With the click of a button the recording process is started. The document files, database files and, optionally, DocuWare CDREQUEST are recorded on the CD or DVD. No additional software is required. DocuWare CDMAKER supports most standard SCSI CD or DVD recorders.

After a successful recording session, the documents can be automatically deleted from the original file cabinet. To ensure data integrity, a file verification procedure can be carried out at the end of the recording session.



Hardware Requirements

- Pentium/AMD processor
- 3.2 Gb EIDE or SCSI hard disk
- 32 Mb RAM
- 17" Monitor at 1024 x 768 resolution
- CD/DVD recorder

Software Requirements

- Windows 98+
- DocuWare
- DocuWare CDMAKER optional module